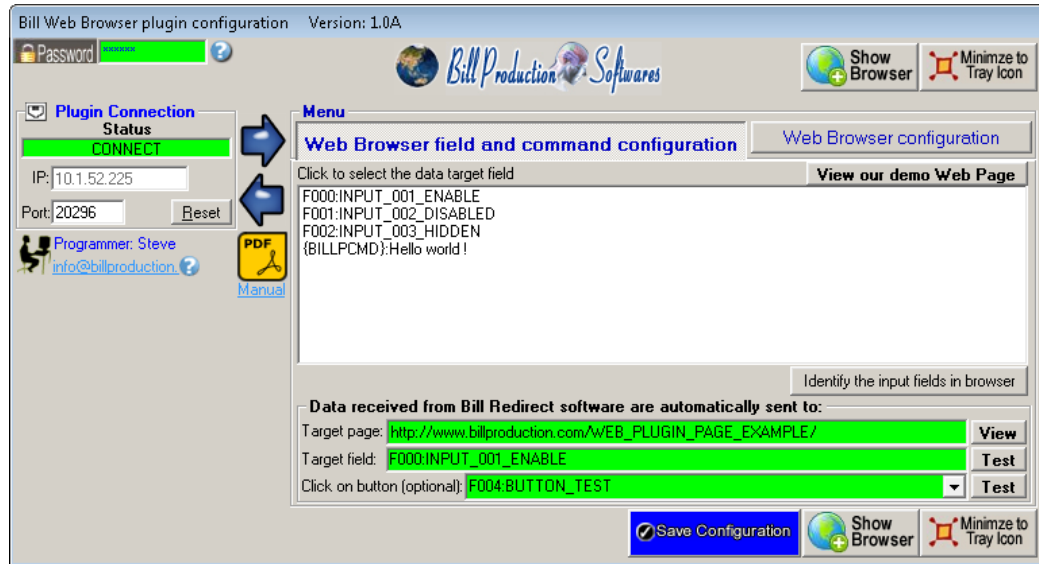




# Bill Web Browser Plugin Version 1.0A and more

Documentation: 28/02/2012



Our Internet site: <http://www.billproduction.com/>

Email: [info@BillProduction.com](mailto:info@BillProduction.com)

## SOFTWARE DESCRIPTION



---

This free resident plugin software, create a real-time connection between Bill Redirect Software and your web application. With this solution, you can communicate with any peripheral to transmit and receive data directly with a web application. The communication with the peripheral is direct and bidirectional (*HTML TAG and Java Script*).

**Supported Operating Systems:** Windows 98,Me,2000,3000,XP,NT4,Vista, Windows 7

Simply the best solution to connect your peripherals (scale, pole display, barcode scanner, proximity reader ... USB, Serial, UPD, TCP, Ethernet, Bluetooth, Wifi ...) with a web application !

 GENERAL INFORMATION

***\* This free plugin works with Bill Redirect version 6.0A and more***

To configure this software you have to enter in the field password [www.billproduction.com](http://www.billproduction.com)  
In Bill Redirect software configuration options you have the possibility to change this password for what you want.

To use some Web Browser Plugins, you must start some instance of the software.  
Use this syntax: [Bill\\_Web\\_Plugin.exe](#) /#INSTANCE\_NAME#

Each instance can have a different configuration !

**Example: Create a Shortcut instance Scanner\_001**

- Create a shortcut on your desktop to start Bill Redirect software  
**Shortcut properties:**
  - In the first field (Target) enter:  
["C:\Program Files\BillProduction\Bill Web Browser plugin\Bill\\_Web\\_Plugin.exe" /#Scanner\\_001#](#)
  - Start our software with this shortcut

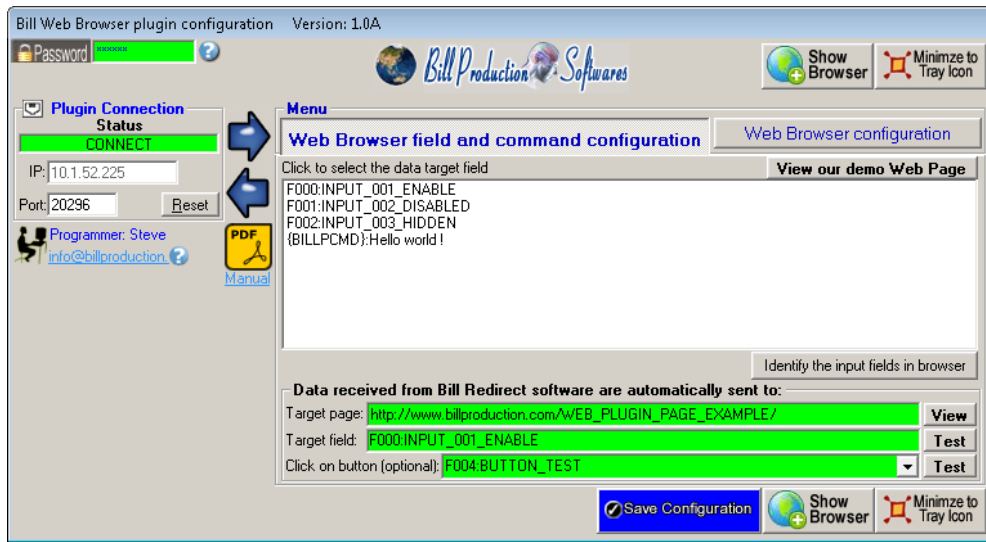
**Example: Create a Shortcut instance Scanner\_002**

- Create a shortcut on your desktop to start Bill Redirect software  
**Shortcut properties:**
  - In the first field (Target) enter:  
["C:\Program Files\BillProduction\Bill Web Browser plugin\Bill\\_Web\\_Plugin.exe" /#Scanner\\_002#](#)
  - Start our software with this shortcut

Don't forget to push the Save Configuration button to save your current setting.



## SOFTWARE DESCRIPTION



### The Plugin Connection Status:

CONNECT, The connection is establish with Bill Redirect software.

RESET, Reset the TCP connection.

ERROR, Can't establish the connection. *You can see the error if you place your mouse cursor to the status field.*

LISTEN, The TCP port wait until the software Bill Redirect open the connection.

### The IP:

In this field you can see the IP address of your computer.

### The Port:

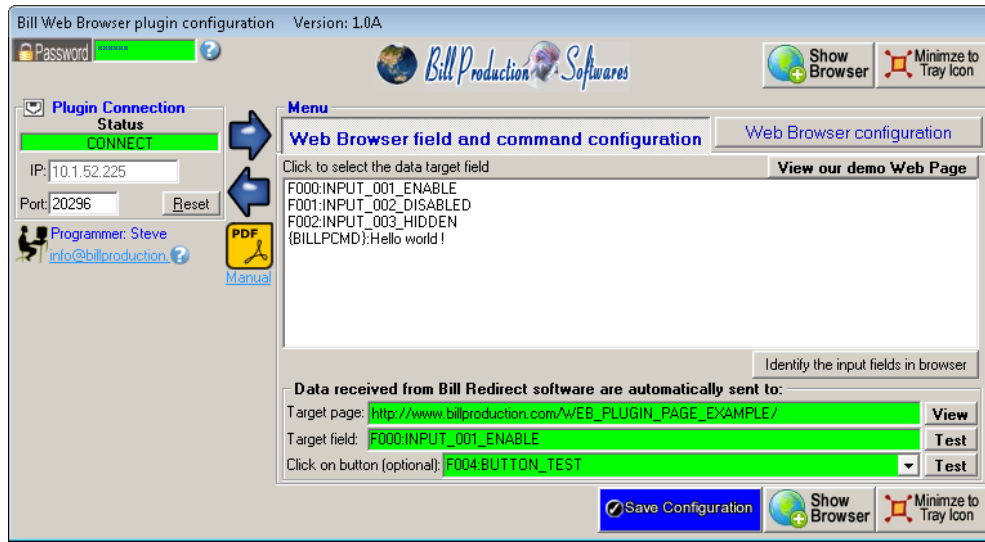
In this field enter the TCP PORT.

### The Reset buttton:

Click on this button to reset the TCP communication.



## SOFTWARE DESCRIPTION (Continuation)



### Menu: Web Browser field and command configuration

#### View our demo Web Page

Use this button to see our example web page.

#### Click to select the data target field

Use this section to select the target web page and field where the data must be sent.

#### Identify the input fields in browser

Use this button to identify the fields in the web browser.

#### Target page: View

In this field enter the link of target web page where the data must be sent.

- \* If the back color field is GREEN then the web page is actually loaded.
- \* Click on View to load this web page in the web browser.

#### Target field:

This field contain the target field name, where the data must be sent on the web page.

- \* If the back color field is GREEN then the field actually exist in the web page.
- \* Click on Test to send data in this field.

#### Click on button (optional):

After each data sent on the web page our software can click on a button on the page. Select the button to click if you want use this option.

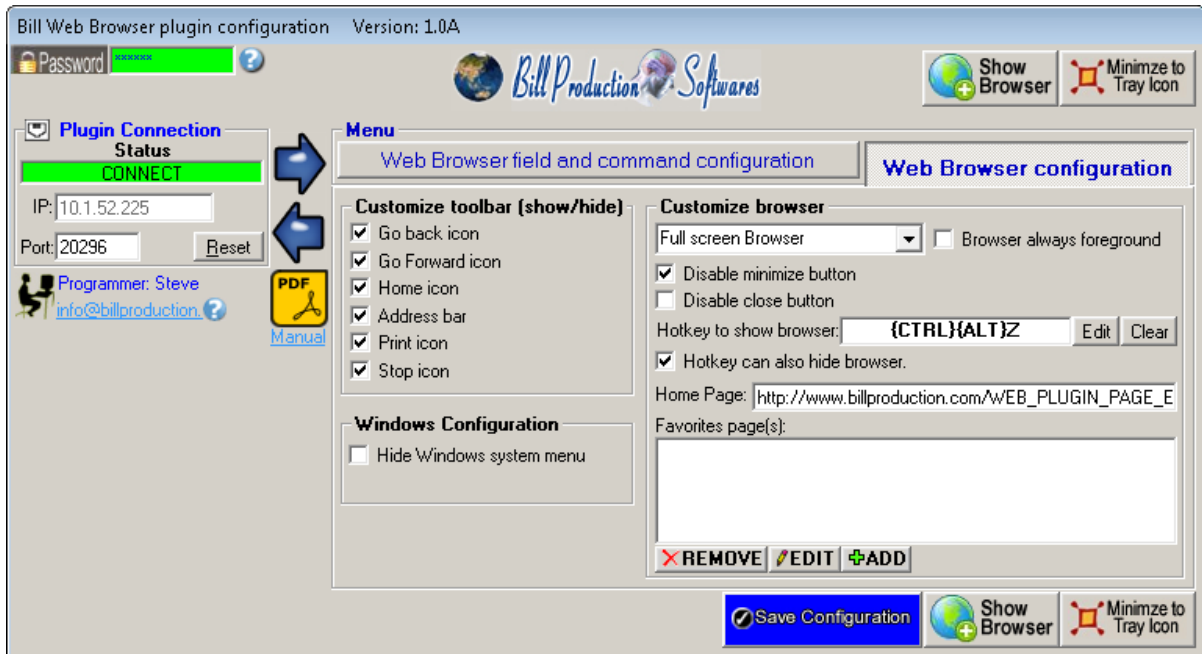
- \* If the back color field is GREEN then the button actually exist in the web page.
- \* Click on Test to simulate the action.

#### Show Browser

Use this button to see the browser.

**Note: The data received are sent on the web page only if the target page is loaded and the field is present in the browser.**

 SOFTWARE DESCRIPTION (Continuation)



**Menu: Web Browser configuration**

**Customize toolbar (show / hide):**

Use this section to define what will be displayed in the web browser toolbar.

**Windows Configuration - Hide Windows system menu:**

Use this option to disable the Windows system menu bar and Start icon.

**Customize browser:**

Use this section to customize the web browser.

## CONFIGURATION

To connect a peripheral and receive the data in Excel



Use this configuration:

Bill Redirect

Web Browser (plugin)

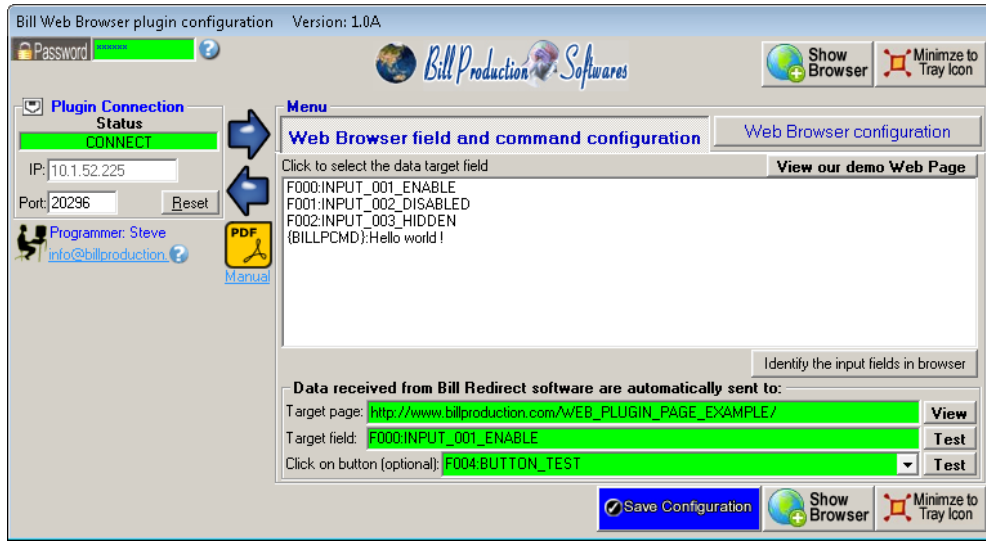
The image shows a sequence of screenshots from the Bill Redirect software. On the left, the 'Plugin' configuration window is shown with the 'On' switch circled in red. Below it are two dialog boxes: 'IP ADDRESS ?' with the value '10.152.225' and 'PORT ADDRESS ?' with the value '20296'. Red arrows point from these dialog boxes to the 'Web Browser plugin configuration' window on the right. This window shows the 'Plugin Connection' status as 'CONNECTED' and the 'Menu' section with 'Web Browser field and command configuration' selected. The 'Target page' is 'http://www.billproduction.com/WEB\_PLUGIN\_PAGE\_EXAMPLE1' and the 'Target field' is 'FOO:INPUT\_001\_ENABLE'. The 'Click on button (optional)' is 'FOO:BUTTON\_TEST'.

Use this configuration if you run **Bill Redirect** on a different computer that **Web Browser Plugin**:

- Section **Keyboard Buffer**: Set the switch to: **Off**
- Section "**Plugin**" set the switch to: **On**
- Section "**Plugin**" click on the button: **Configuration**
- At question #1 IP, enter the IP address that you can see in the software "Web Browser (plugin)"
- At question #2 Port, enter the same port number that you use in "Web Browser (plugin)"

Use this configuration if you run **Bill Redirect** and the **Excel Plugin** on the same computer:

- Section **Keyboard Buffer**: Set the switch to: **Off**
- Section "**Plugin**" set the switch to: **On**
- Section "**Plugin**" click on the button: **Configuration**
- At question #1, IP enter: **127.0.0.1**
- At question #2, Port enter the same port number that you use in "Web Browser (plugin)"



### Web Browser (plugin) configuration:

- **In the configuration:** Click on button: [Show Browser](#)
- **In the Browser:** enter the address of the web page where the data received from your peripheral must be sent and press [Enter](#).
- \* You can use our example to do your first test: [http://www.billproduction.com/WEB\\_PLUGIN\\_PAGE\\_EXAMPLE/](http://www.billproduction.com/WEB_PLUGIN_PAGE_EXAMPLE/)
- **In the configuration:** Click on button: Identify the input fields in browser
- \* **In the Browser:** a number appear in each field
- **In the configuration:** Select in the list box the field where the data must be sent
- **Optional: In the configuration:** After each data sent our software can click on a button in the page. Select the button to click if you want use this option
- **In the configuration:** Click on button: [Save Configuration](#)

### Bill Redirect configuration example to connect a peripherals:

Barcode Reader: [http://www.billproduction.com/Bill\\_Redirect\\_Barcode\\_Scanner.pdf](http://www.billproduction.com/Bill_Redirect_Barcode_Scanner.pdf)  
 Scale: [http://www.billproduction.com/Bill\\_Redirect\\_scale.pdf](http://www.billproduction.com/Bill_Redirect_scale.pdf)  
 Other devices: <http://www.billproduction.com/documentation.html>

**\*\*\* Important \*\*\***

**Do what is indicated in this documentation except you must enable the Plugin section and disable the Keyboard Buffer section.**



# Web Browser Plugin HTML TAG

To send data command from your web page to Bill Redirect peripheral use this HTML syntax TAG:

```
<INPUT TYPE=hidden NAME="SEND_COMMAND" VALUE="{BILLPCMD}Hello world !">
```

\*\*\* Note: Replace **Hello world !** by what you want.

Example HTML TAG to send Hello Word ! to serial port configured in Bill Redirect:

```
<INPUT TYPE=hidden NAME="SEND_COMMAND" VALUE="{BILLPCMD}{TX_SERIAL[Hello Word !{ASCII:13}]}">
```

Our web page example: [http://www.billproduction.com/WEB\\_PLUGIN\\_PAGE\\_EXAMPLE/](http://www.billproduction.com/WEB_PLUGIN_PAGE_EXAMPLE/)

Use the Bill Redirect manual to see all the commands available:

[http://www.billproduction.com/Bill\\_Redirect\\_Manual.pdf](http://www.billproduction.com/Bill_Redirect_Manual.pdf)

**\*\*\* Important \*\*\***

**In Bill Redirect software in section Plugin you must set the switch to: ON**

**For more documentation visit:**



<http://www.billproduction.com/documentation.html>



**If a problem persist or to do more  
use our  
Software configuration and integration service  
It's free, fast (*usually the same day*), and efficient !  
Submit your case to [info@billproduction.com](mailto:info@billproduction.com)  
and receive a customized solution !**



For more flexibility/options or an installation package build for your company:  
[info@BillProduction.com](mailto:info@BillProduction.com)

