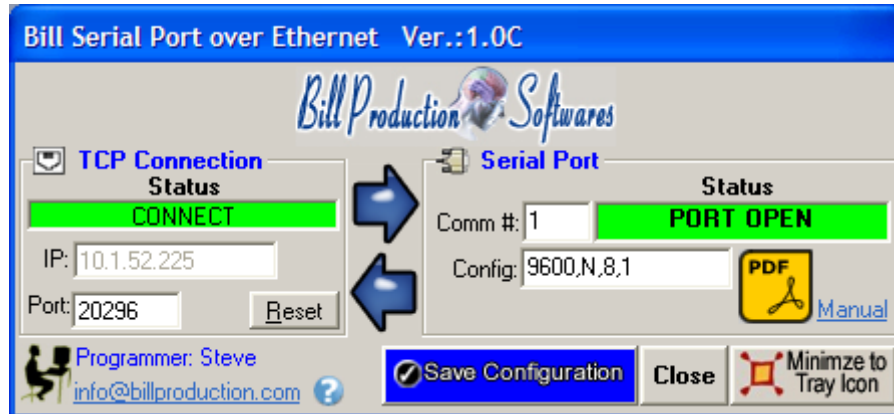




Bill Serial Port over Ethernet Version 1.0C and more

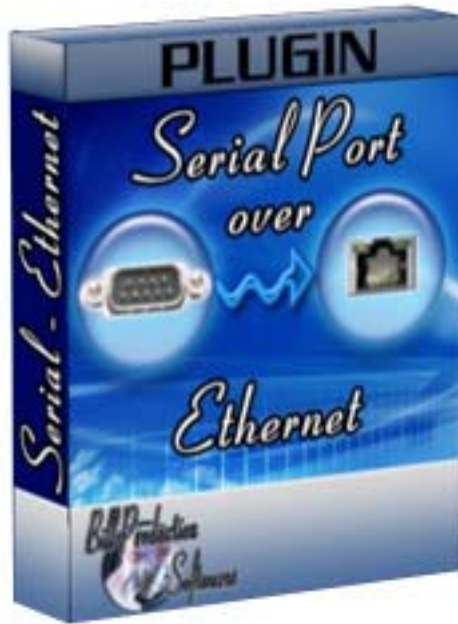
Documentation: 10/02/2009



Our Internet site: <http://www.billproduction.com/>

Email: info@BillProduction.com

SOFTWARE DESCRIPTION



This free resident plugin software, open a Serial Port connection with your serial peripheral and redirect the data to Bill Redirect software over a Ethernet TCP connection. With this solution, you can connect a serial peripheral on a computer and receive the data to a other computer.

Supported Operating Systems: Windows 98,Me,2000,3000,XP,NT4,Vista

Simply the best Serial Port over Ethernet software available !

 GENERAL INFORMATION

** This free plugin work with Bill Redirect version 2.0U and more.*
Don't forget to push the Save Configuration button to save your current setting.



Custom Software Development

With over 15 years of experience in successfully providing Custom Software Development solutions for over 300 customers, we have honed our processes and skills to cater to your specific business needs.

To request a feature, a Customize option or any kind of Software:

Contact by email: info@billproduction.com

Software configuration and integration service

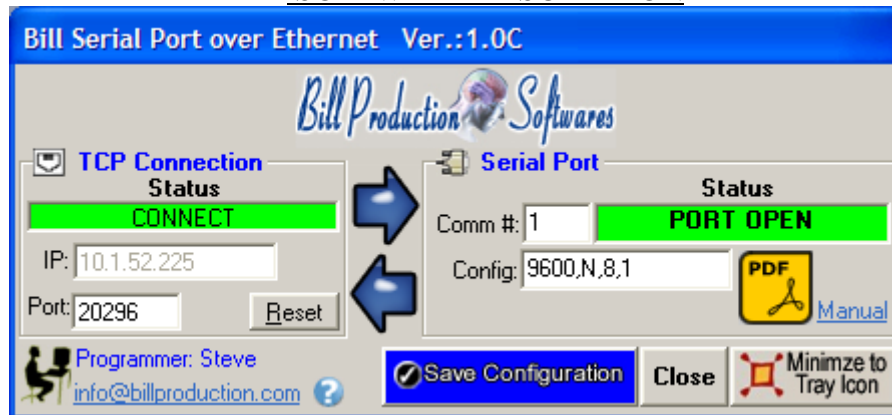
It's free, fast, and efficient !

Submit your case to info@billproduction.com

and receive a customized answer !



SOFTWARE DESCRIPTION



The Status:

CONNECT, The connection is establish with Bill Redirect software.

RESET, Reset the TCP connection.

ERROR, Can't establish the connection. *You can see the error if you place your mouse cursor to the status field.*

LISTEN, The TCP port wait until the software Bill Redirect open the connection.

The IP:

In this field you can see the IP address of your computer.

The Port:

In this field enter the TCP PORT.

The button Reset:

Click on this button to reset the TCP communication.

The Comm #:

Use this field to chose the serial port number (*where your peripheral is connected*).

The Comm #:

If the back color field is GREEN, it's because the COM is present and available.

The Config:

Use this field to sets the baud rate, parity, data bit, and stop bit parameters.

* Example: **9600,N,8,1**

Valid baud rates: 110, 300, 600, 1200, 2400, **9600**, 14400, 19200, 28800, 38400, 57600, 128000, 256000

Valid parity: E = Even, M = Mark, N = None, O = Odd, S = Space

Valid data bit: 4, 5, 6, 7, **8**

Valid stop bit: **1**, 1.5, 2

The button Save Configuration:

Save your current setting.

The button Close:

To close this software.

CONFIGURATION

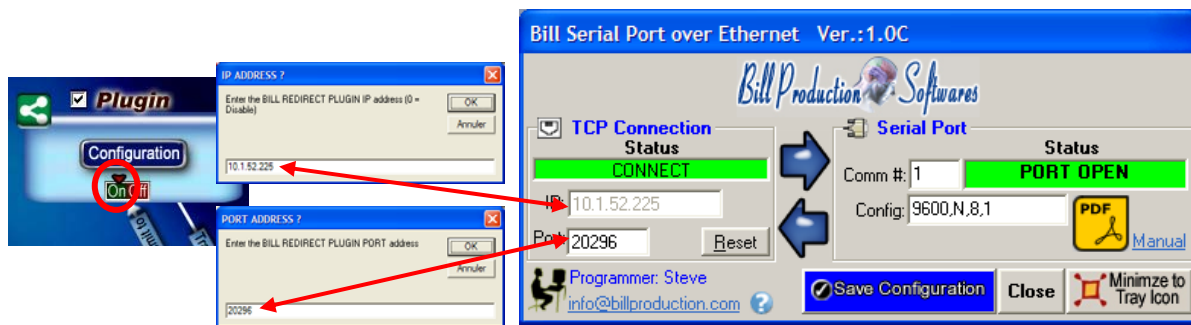
To connect a serial peripheral on a computer and receive the data to a other computer



Use this configuration:

Computer # 1
Bill Redirect

Computer # 2
Bill Serial Port over Eth. (plugin)



In Bill Redirect software use this configuration:

- Section KEYBOARD BUFFER: Set the switch to: OFF
- Section “Plugin” click on the button “Configuration”
- At question #1 IP enter the IP address that you can see in the software “Bill V.Serial Port over Eth. (plugin)”
- At question #2 Port enter the same port number that you use in the software “Bill V.Serial Port over Eth. (plugin)”
- Set to ON the switch to activate the reception of the data

Bill Virtual Serial Port over Ethernet (plugin) configuration:

- * You can use BillRedirect and the plugin on the same computer.
- * You can use BillRedirect on a computer and the plugin on another computer.



For more flexibility or options contact
Send your request by e-mail to: info@BillProduction.com